

鑽石 CBN 砂輪成型修整機

**Diamond CBN Grinding Wheel
Profile Dressing Machine**



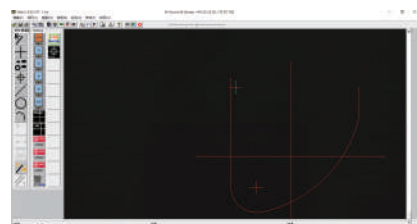
WEYU Machinery Co., Ltd.
威宇機械有限公司

GF-250

- 機床米漢納鑄鐵一體式
- 各軸向採用C5等級精密螺桿&P級線軌
- 旋轉軸承加大·軸向輕量化·抗震強度優化
- 可升級遠心鏡頭研磨高精度砂輪
- Machine based made by MEEHANITE metal one-piece casting.
- All axial used C5 level ball screw and level P linear guide
- Enlarge the rotation bearing, axial light weight as well as Machine anti-vibration strength optimization
- It can upgraded to Telecentric to grind high precision wheel



Metric軟體功能
The function of Metric



設計特性 Design Features

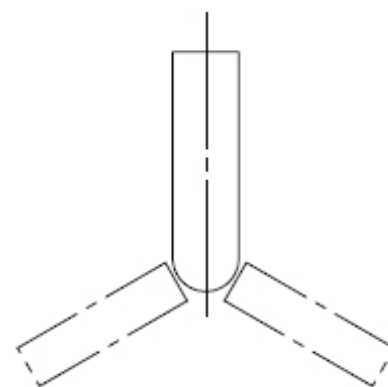
GF-250是一台可加工鑽石砂輪修磨和成型的專用機器·主要能配合砂輪與刀具製造商針對所需要的砂輪研磨成型

GF-250 machine is specialized at grinding and truing on the Diamond wheel. The mains purpose is to supply professional grinding wheel manufacturers and tool manufacturers to grind and truing the Diamond wheel they need and require.

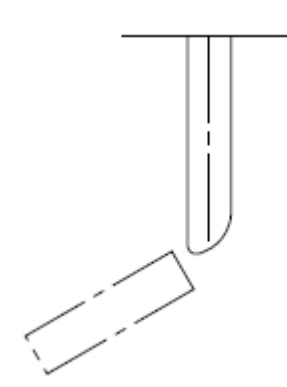
應用範例 Applications

加工平面·角度·圓弧·配合ccd和專業版量測軟體使加工精準度更高。
The machine equips CCD with the professional measurement software to machine the plane, angle, arc for higher processing accuracy.

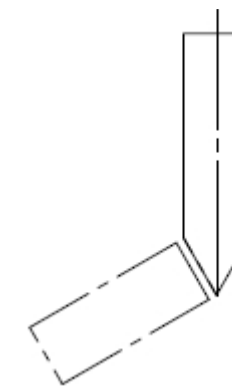
圓角研磨
Grinding round corner



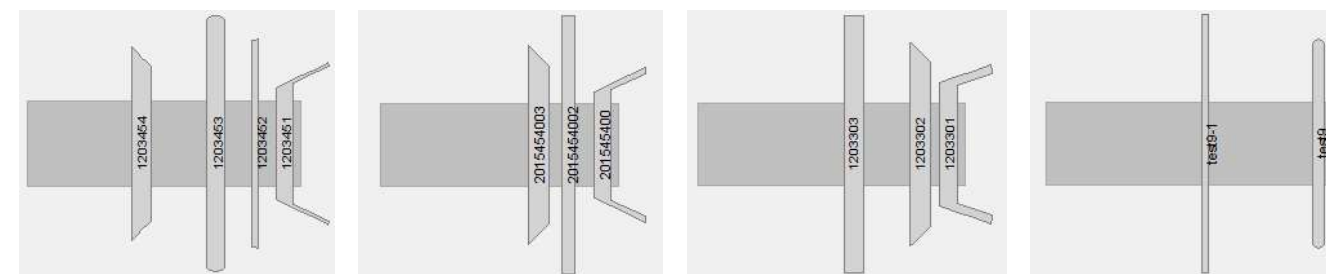
多圓角研磨
Grinding multiple-fillet



角度研磨
Grinding angle



五軸磨刀機砂輪加工型式 Processing for grinding wheel of 5-Axis grinding machine

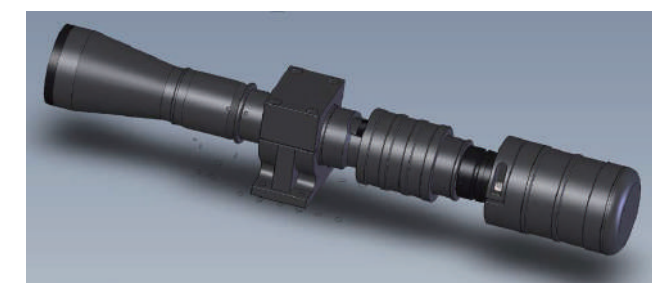


特殊附件 Optional Accessories

雙用水機&吸塵
Water & dust collection system



遠心鏡頭
Adjustable Telecentric Zoom System



GF-250 機械規格 Machine Specifications

被修砂輪軸 Diamond / CBN Grinding Wheel	
砂輪主軸錐度 Spindle type	HSK50A(依照客戶配置/customized)
砂輪最大直徑 Max. diameter	Ø 250 mm
砂輪最小直徑 Min. diameter	Ø 50 mm
砂輪旋轉速度 Speed	200-2500RPM
砂輪馬達 Motor power	1HP(0.75kw)
砂輪左右行程 Cross travel	170mm(手動/manual)
砂輪前後行程 Longitudinal travel	130mm(手動/manual)
修整砂輪軸 Truing / Dressing wheel	
修整砂輪最大尺寸 Dimensions	Ø175 × 12T × 31.75H mm
砂輪旋轉速度 Speed	200-2500rpm
砂輪馬達 Motor power	1 HP(0.75kw)
砂輪前進方向 Longitudinal travel	70mm(手動/manual)
砂輪擺動軸 Oscillation drive	100mm(自動 /Auto)
砂輪旋轉角度 Swivelling travel	±90°
機械規格 Machine	
占地面積 L x W x H	1900x1300x1780mm
機器重量 Weight	1450kg

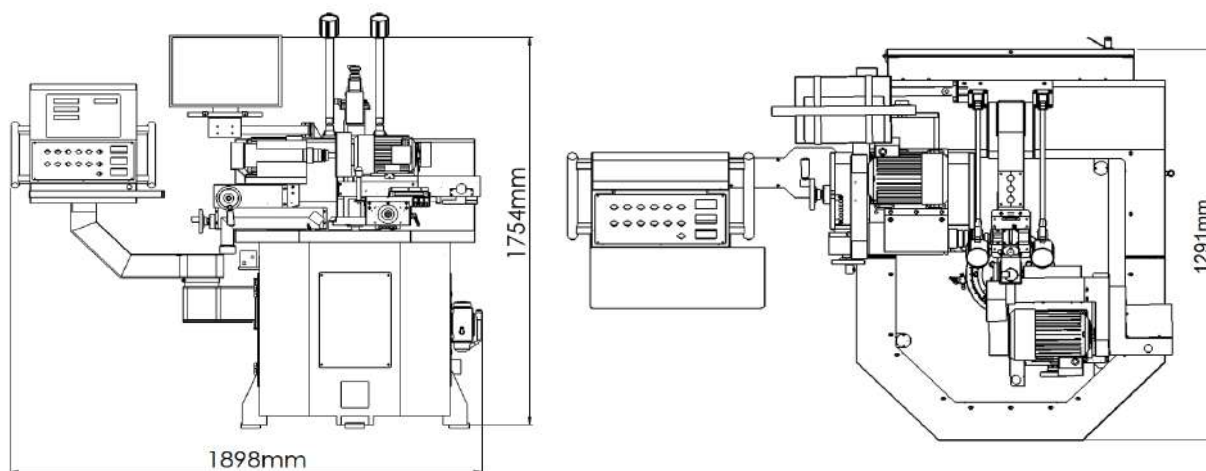
標準配件 Standard Accessories

- 半罩式護罩
Monitor Half splash guard (manual)
- 光學尺(解析度5μ)
Optical linear scales with digital display counter (Resolution:0.005mm)
- 標準工具及工具箱
Tool Box / Adjusting Tool
- 標準版量測軟體
C.C.D Camera System with Magnification 13x~85x
- 吸塵機 Dust Collection
- 工作燈 Work Lamp
- 基礎墊塊和調整螺絲
Leveling Bolts and Blocks
- 修整砂輪法蘭 Dressing Wheel Flange
- 22"螢幕 Monitor 22" Full HD

特殊附件 Optional Accessories

- 全罩鍍金 Full splash guard
- 各式廠牌轉接桿
Customer specified adapter and shank
- 專業版量測軟體&遠心鏡頭
Measuring system & Telecentric Zoom System
- 砂輪左右行程加大(200mm)
Increase cross travel to 200mm
- 變壓器 Transformer
- 雙用水機&吸塵
Dust collector & cooling system

機械尺寸圖 Machine Dimensions



★本公司對產品隨時再進行研究改進，絕對保有隨時更改設計、規格、尺寸及機械結構之權力。
All specification, dimension and design characteristics shown in this catalogue are subject to change without notice.



WEYU Machinery Co., Ltd.
威宇機械有限公司

TEL: +886-4-25689924 FAX: +886-4-25689266
E-mail: weyu.gary@msa.hinet.net
工廠: 台中市神岡區大圳路30-1號